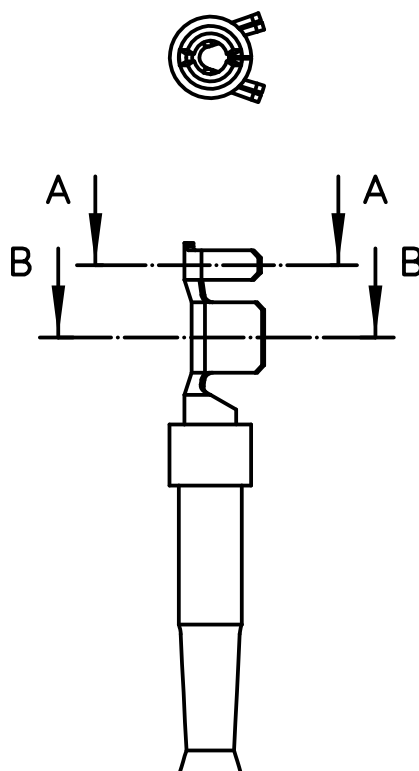
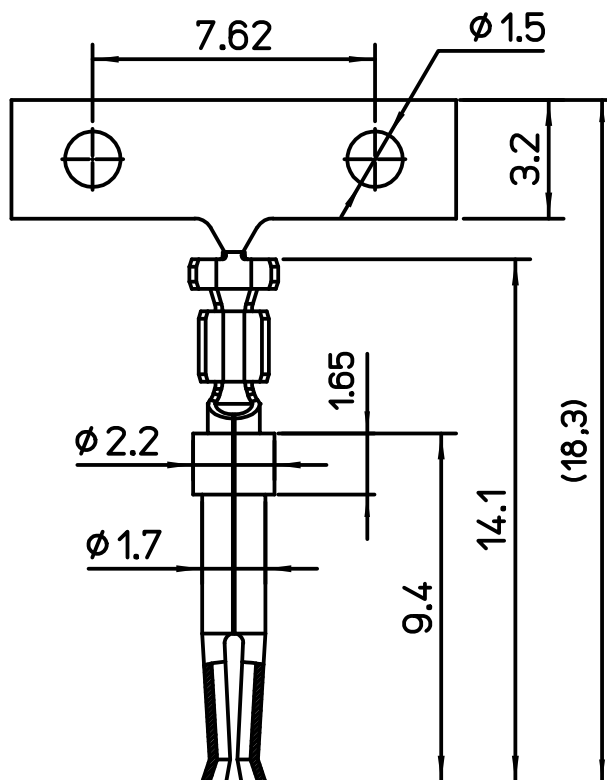
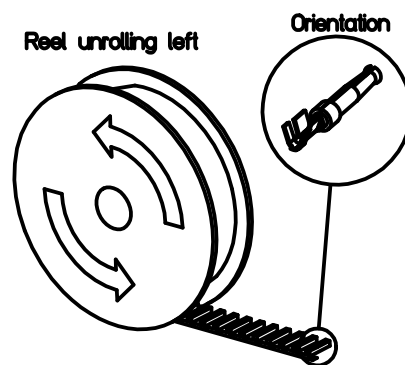
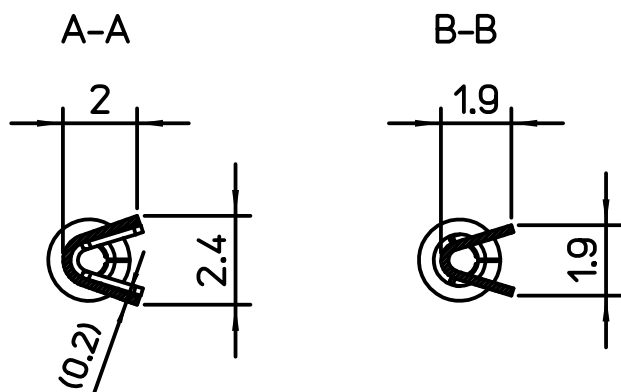


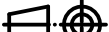

All rights reserved

Diritti riservati



ILME CODE	PERFORMANCE LEVEL
SIF1D 0.5C	PL1
SIF2D 0.5C	PL2
SIF3D 0.5C	PL3

- Selective Gold plating over Nickel in the contact area, tin plating in the crimp area, RoHS conform
- Material: brass (leadfree)
- Reel of 500 contacts

REV	DATA	FIRMA	
 Dimensions in mm		Simplified representation with dimensions without tolerance	
Original Size A4		SIFxD 0.5C Stamped female crimp contacts 5A 0.22-0.56mm ² , 20-24 AWG	Scale 5:1
Date 29/10/19			
Sign. Pitasi			
			

SIFxD 0.5C

Stamped female crimp contacts 5A 0.22-0.56mm², 20-24 AWG

Scale
5:1

